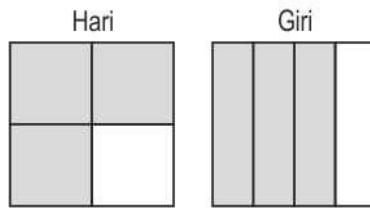


- 1 Hari and Giri are painting two identical walls.

The figure below shows how the walls looked like at lunch time.



Who painted a greater part of the wall?

- A. Hari
B. Giri
C. Both of them painted equal parts of the wall.
D. (We cannot say anything from the given information.)

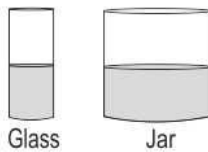
- 2 Shown below is the outline of a drawing.



Which of these is a part of the outline above?

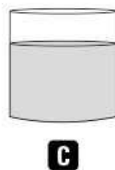
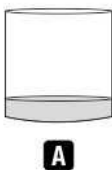


- 3 Shown below is a glass and a jar of equal height. Both are half filled with water.

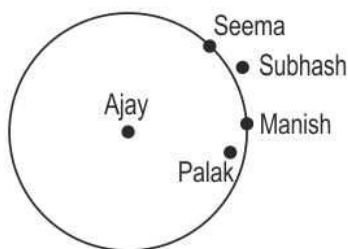


All the water from the glass is now poured into the jar.

Which of these figures shows how the level of water in the jar would look like?



- 4 Five children drew a circle to play a game. At the start of the game, they stood at different locations as shown below. Ajay was at the centre of the circle.



Which two children were at the SAME distance from Ajay?

- A. Seema and Palak
B. Seema and Manish
C. Subhash and Palak
D. Subhash and Manish