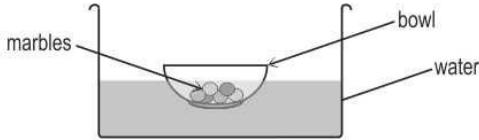


- 1 Fatima took a large vessel of water and carefully placed a bowl with 6 marbles on the surface of the water. The figure below shows how the bowl floated.



Then, Fatima took 3 marbles out of the bowl. What will happen to the bowl?

- A. It will float a little lower than before.
- B. It will float a little higher than before.
- C. It will float at the same level as before.
- D. It will sink to the bottom of the vessel.

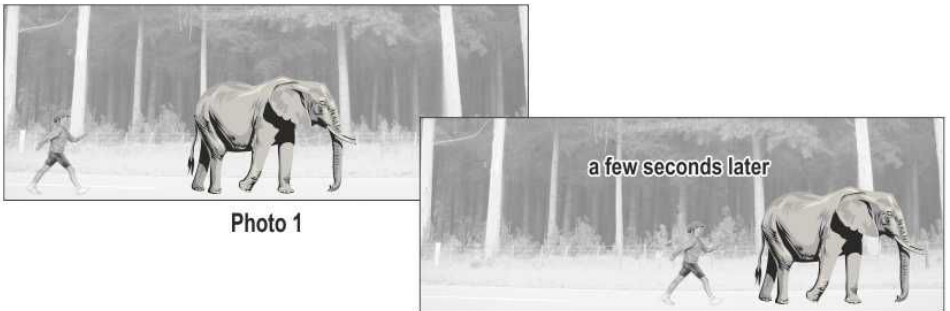
- 2 The moon changes its phase from new moon to full moon as shown here.



Which of the following match phases P and Q?

<p><b>A</b></p> <p>P                      Q</p>	<p><b>B</b></p> <p>P                      Q</p>
<p><b>C</b></p> <p>P                      Q</p>	<p><b>D</b></p> <p>P                      Q</p>

- 3 Shown here are two photographs taken by a person in a jungle. The girl and the elephant were walking from left to right. The second photo was taken a few seconds after the first one.



What can we say based on the photographs?

- A. The elephant was walking faster than the girl because it is still ahead of the girl.
- B. The girl was walking faster than the elephant because the distance between them decreased.
- C. The elephant and the girl were walking at the same speed because they have still not reached the end.
- D. We cannot say anything for sure till we know the exact time at which the two photographs were taken.

- 4 In which of the following pictures is a wheel helping TO MOVE an object?



- A. only P
- B. only Q
- C. only P and Q
- D. all - P, Q and R