



9th International Olympiad of Science 2017



Presented by:
SILVERZONE FOUNDATION
 NEW DELHI - INDIA

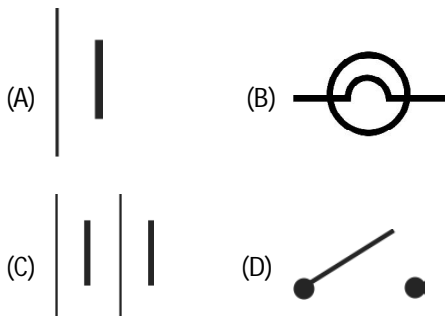
Organized by:
SOCIETY OF SCIENCE EDUCATION
 New Delhi, India
FOR SUPREMACY IN SCIENCE
www.silverzone.org

CLASS 7th SYLLABUS & SAMPLE QUESTIONS

Nutrition, Fibre to Fabric, Physical and Chemical Changes, Acids, Bases and Salts, Weather, Climate and Adaptations of Animals to Climate, Winds, Storms and Cyclones, Life Processes, Motion and Time, Electricity and Light, Our Environment, Mental Aptitude and Reasoning

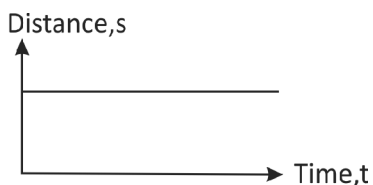
The Actual Question Paper Contains 50 Questions. The Duration of the Test Paper is 60 Minutes.

1. Which one of the following is the symbol of an electric bulb?



(E) None of these

2. Look at the following graph:



The above graph shows that the object is at/in:

- (A) Rest
 (B) Motion
 (C) Uniform motion
 (D) Uniform acceleration
 (E) All of these

3. A clinical thermometre has kink in its tube. What function does it perform?

- (A) It prevents mercury from coming out of bulb
 (B) It prevents back flow of mercury into the bulb
 (C) It helps in connecting the mercury tube with the bulb
 (D) All of these
 (E) None of these

4. In the autotrophic mode of nutrition:

- (A) food is prepared from simple inorganic substances by the process of photosynthesis
 (B) food is obtained from dead and decaying organic substances
 (C) food is obtained from green plants
 (D) food is obtained from the host
 (E) None of these

5. Name the blood cells which carry oxygen in our body.

- (A) RBC
 (B) WBC
 (C) Blood platelets
 (D) Antigen
 (E) None of these

6. Which one of the following statements is correct?

Statement A: The higher the electrical resistance of a material, the greater is the heat produced when current passes through it.

Statement B: The higher the electrical resistance of a material, the lower is the heat produced when current passes through it.

- (A) Statement (A) is true
 (B) Statement (B) is true
 (C) Both statement (A) and (B) are true
 (D) Both statement (A) and (B) are false
 (E) None of these

7. In the following table, few activities are given:

Number	Activity
1.	Melting of ice
2.	Decomposition of leaves
3.	Burning of wood
4.	Evaporation of water
5.	Digestion of food
6.	Spoiling of food
7.	Painting of wooden box

Which of the preceding activities involve chemical change?

- (A) Activities 1,2,3,5 (B) Activities 2,3,4,5
 (C) Activities 2,3,4,6 (D) Activities 2,3,5,6
 (E) None of these

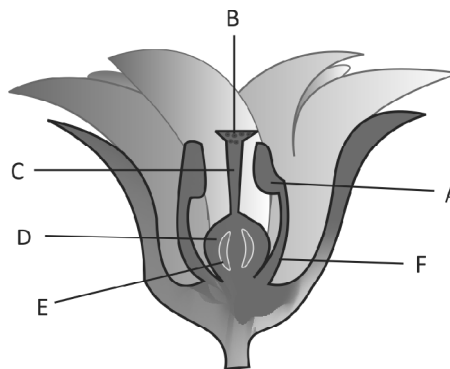
8. An atom gets charged due to:

- (A) Transfer of proton
 (B) Transfer of neutron
 (C) Transfer of electron
 (D) Transfer of nucleus
 (E) None of the above

9. If a ball is thrown vertically upwards in the moving train, what will happen?

- (A) Ball returns to the thrower
 (B) Ball does not return to the thrower
 (C) Ball moves in the direction of train
 (D) Ball moves in opposite direction of train
 (E) None of these

10. Name the part of the flower, which has been represented by the letter A.



- (A) Anther (B) Stigma
 (C) Filament (D) Style
 (E) None of these

ANSWERS

1. (B) 2. (A) 3. (B) 4. (A) 5. (A) 6. (A) 7. (D) 8. (C) 9. (A) 10. (A)