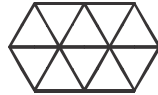
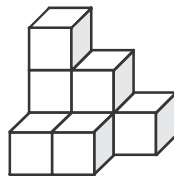


1 → What is the unit shape used for the given tessellation ?

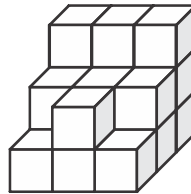


- (A)  (B)   
 (C)  (D) 

2 → How many cubes must be added to solid A so that it becomes solid B ?



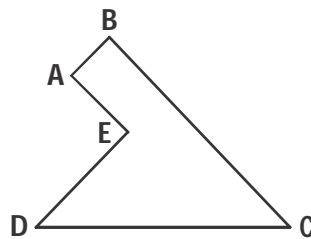
Solid A



Solid B

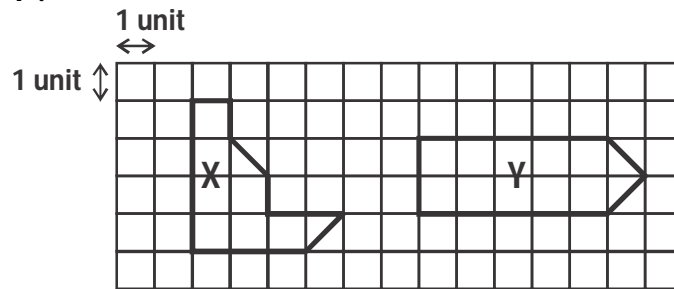
- (A) 8 (B) 19 (C) 11 (D) 27

3 → In the figure below, which two lines are perpendicular to AE ?



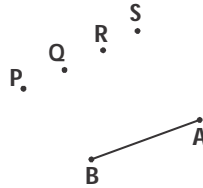
- (A) AB and BC (B) AB and DE  
 (C) BC and CD (D) DE and CD

4 What is the difference between the areas of figures X and Y?



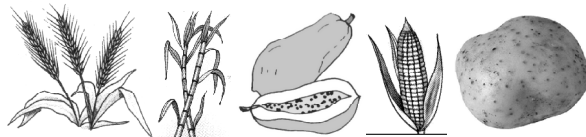
- (A) 2 sq. units
- (B) 3 sq. units
- (C) 5 sq. units
- (D) 1 sq. unit

5 The end point B of the line is joined to the A dot to get  $\angle B = 86^\circ$ . Identify the dot.



- (A) P
- (B) Q
- (C) R
- (D) S

6 → The food items shown in the figure are sources of mainly

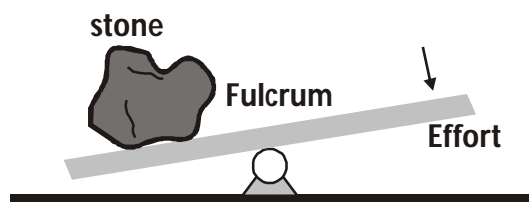


- (A) fats. (B) carbohydrates.  
(C) proteins. (D) vitamins.

7 → The controlling centre of the body is



8 → Observe the figure given below and identify the type of lever.

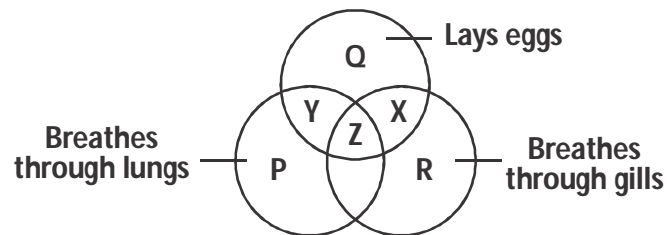


- (A) (I) class lever (B) (II) class lever  
(C) (III) class lever (D) All of the above


9 **By looking at a plant in the garden, Rohan came to know that it has fibrous roots. What led Rohan to this conclusion ?**

- (A) Arrangement of flowers on stem
- (B) Arrangement of branches on the stem
- (C) Number of fruits on the plant
- (D) Type of venation on the leaves

10 **Observe the given Venn diagram. Which alphabet represents Frog ?**



- (A) Y
- (B) X
- (C) Z
- (D) P

- 11 How many spokes are there in the Ashoka Chakra on Indian flag ?  
(A) 12 (B) 24 (C) 10 (D) 15
- 12 Identify the given cartoon character from a famous TV Series.  
(A) Dorami (B) Wilma  
(C) Merida (D) Shizuka
- 
- A cartoon illustration of a young girl with black hair in pigtails, wearing a grey sweater over a white collared shirt and a dark skirt. She is waving with her right hand.

- 13 Which gas is responsible for the global warming ?  
(A) Nitrogen (B) Noble gases  
(C) Carbon dioxide (D) Sulphates

- 14 Which company has the tag line 'I'm loving it' ?  
(A) KFC (B) Domino's  
(C) McDonald's (D) Pizza hu

- 15 What does the acronym IPL stand for ?  
(A) Indian Premier League  
(B) Indian Primary League  
(C) International Prominent League  
(D) International Premier Liberation

